

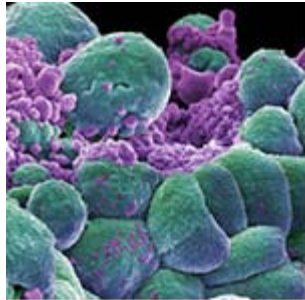


February 2016

Share:



# cell passages



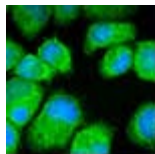
## Epithelial-mesenchymal Transition (EMT) Tools

Py8119 and Py230 cells are mammary cell lines derived from spontaneously arising tumors in transgenic MMTV-PyMT C57Bl/6 female mice. Py8119 ([ATCC® CRL-3278™](#)) has a distinct mesenchymal-like morphology, while Py230 ([ATCC® CRL-3279™](#)) displays mesenchymal features. When employed in experiments side by side, these cell lines are useful for investigating the EMT in tumorigenesis and metastasis.

ATCC provides the following components to help you build your EMT models:

- PY8119 Mesenchymal-like Mammary Cells ([ATCC® CRL-3278™](#))
- Py230 Epithelial-like Mammary Cells ([ATCC® CRL-3279™](#))
- F-12K Medium (Kaighn's Modification of Ham's F-12 Medium) ([ATCC® 30-2004](#))
- Dulbecco's Phosphate-buffered Saline ([ATCC® 30-2200](#))
- Trypsin-EDTA Solution, 1X ([ATCC® 30-2101](#))

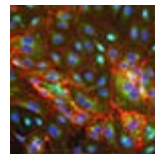
[Browse](#) our extensive collections of breast cancer cell lines.



## Breast Cancer

In 2015, the American Cancer

Society reported breast cancer as the leading cause of death among all female cancer patients in the United States. Breast cancers encompass a heterogeneous array



## Physiologically Relevant Controls

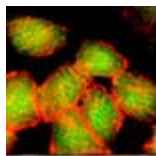
All experiments should include physiologically relevant controls.

of tumor types that are classified according to their histological and molecular characteristics. To support your breast cancer research needs, ATCC provides breast cancer cell lines, a comprehensive Breast Cancer Resource Book, breast cancer tumor cell panels, as well as human primary and hTERT-immortalized mammary cells.

[Learn](#) more about ATCC Breast Cancer Resources.

ATCC offers both primary and hTERT-immortalized mammary epithelial cells. These cells are a mixed culture derived from the myoepithelium and luminal epithelium. They are well-suited for the study of normal mammary physiology, mammary oncogenesis, and can be used in drug discovery applications.

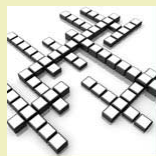
Start your research with ATCC Primary Mammary Epithelial Cells; Normal, Human ([ATCC® PCS-600-010™](#)) and hTERT-HME1 [ME16C] ([ATCC® CRL-4010™](#)) for your physiological models relevant for your research.



## Breast Cancer Tumor Cell Panels

For optimal drug discovery studies, ATCC offers Tumor/Normal Matched Cell Line Pairs, Genetic Alteration Panels, and Panels by Molecular Signature. ATCC Tumor Cell Panels combine authenticated, well-characterized cell lines with mutation data from the Sanger Institute Catalogue of Somatic Mutations in Cancer (COSMIC) to create powerful tools for cancer research and drug discovery.

Discover more [ATCC Breast Cancer Tumor Cell Panels](#) today!



### ATCC Puzzle

Triple  
Negative

Nomenclature

Try this [month's crossword puzzle](#) and test your knowledge of breast cancer! The solution will appear in next month's issue.

For the solution to last month's Lung Location puzzle [click here](#).

### Publications

- [Breast Cancer Resource Book](#)
- [Breast and Gynecologic Tumor Cell Lines](#)
- [Breast Cancer Biomarkers Panel](#)
- [Breast Cancer Research Resources Presentation](#)



## Frequently Asked Questions

Q: What is epithelial-mesenchymal transition (EMT)?

A: EMT describes the process whereby epithelial cells revert to a mesenchymal state. In the setting of cancer, the process promotes metastasis. This process is driven by alterations in gene expression, resulting in the loss of cell polarity and cell-to-cell adhesion molecules. In addition, the cells gain migratory and invasive properties as well as resistance toward chemotherapeutics.

[Have more questions?](#)

---

Cell Biology Collections

---

Cell Line Authentication

---

Facebook

---

Cell Biology Resources

---

Cell Culture Conversation

ATCC - 10801 University Boulevard, Manassas, VA 20110

© 2016 American Type Culture Collection. The ATCC trademark and trade name, and any other trademarks listed in this publication are trademarks owned by the American Type Culture Collection unless indicated otherwise.

\*Winning videos are limited to U.S. customers only; void where prohibited.

To receive emails from ATCC, please take a few minutes to update your profile [click here](#).

To Unsubscribe, click [here](#).

[Privacy Policy](#).