

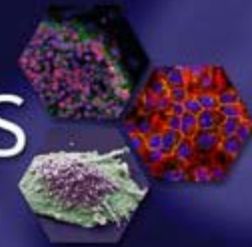


May 2017

Share:



cell passages



Selecting the appropriate primary cell just got easier

ATCC offers Primary Cell Solutions, a standardized cell culture system that includes high quality cells, media, supplements, reagents, and protocols.

[Explore the Primary Cell Selection Guide>>](#)

- Greater than 70% post-thaw viability
- Guaranteed excess of 10 population doublings
- Provided with optimized growth protocols
- Tested for positive and negative surface markers
- Guaranteed high purity
- Additional donor information available



Angio-Ready™ - An improved *in vitro* model of angiogenesis

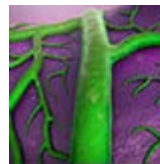
Kevin Grady, B.S.

Product Line Business Manager, ATCC
and

Chaozhong Zou, Ph.D.

Senior Scientist, ATCC

Join us on Thursday, June 8 to hear Mr. Kevin Grady introduce the Angio-Ready™ Angiogenesis Assay System, an *in vitro* co-



Are you Angio-Ready™?

To support the need for angiogenesis screening in cancer, cardiovascular disease, diabetes, and other research areas, ATCC has created the Angio-Ready™ kit (available in 2 assay and 10 assay sizes; ATCC® ACS-2001-2™ and ACS-2001-10™). This convenient, preconfigured, single-use kit comprises the ideal ratio of GFP-expressing hTERT-immortalized human aortic endothelial cells premixed with hTERT-immortalized mesenchymal stem cells, and is supplied with a complete angiogenesis medium

culture system for measuring angiogenesis. Dr. Chaozhong Zou will then present data showing that this GFP-expressing co-culture system forms functional tubular structures and responds appropriately in a dose-dependent manner to known agonists and inhibitors of angiogenesis.

[Register for the webinar>>](#)

(ATCC[®] ACS-2008[™]).

[Discover Angio-Ready>>](#)

- Minimal cell culturing
- Maximal run-to-run consistency
- Dyleless, matrixless, and scalable
- Easy to perform
- Live imaging of tubule formation after three to seven days



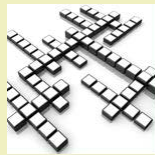
ATCC[®] Photo Contest 2017

You could win a \$300 gift card or a \$300 ATCC product credit*.

Enter your most beautiful, striking, or scientifically exciting images featuring ATCC cell lines, primary cells, stem cells, bacteria, viruses, fungi, yeast, or protists.

Submit your images today at www.atcc.org/photocontest>>

*Winning photos are limited to U.S. customers only; void where prohibited.



ATCC Puzzle

Try this [month's crossword puzzle](#) and test your knowledge of Cardiology. The solution will appear in next month's issue.

For the solution to last month's Telomerase Territory puzzle [click here](#).

Resources

- [Human Primary Cell Selection Guide](#)
- [Angiogenesis Research Solutions](#)
- [In vitro angiogenesis assay using the ATCC[®] Angio-Ready[™] System](#)



Frequently Asked Questions

Q: Do the immortalized TeloHAEC cells (ATCC[®] CRL-4052[™] and CRL-4054[™]) retain the characteristics of endothelial cells?

A: TeloHAEC and TeloHAEC-GFP cells exhibit the important features of primary endothelial cells, such as CD31 expression, AcLDL uptake, inflammatory responses (CD54, CD62e, and CD106 surface protein upregulation) upon TNF α treatment, and increased cell proliferation by VEGF stimulation.

[Have more questions?](#)

Cell Biology Collections

Cell Line Authentication

Facebook

Cell Biology Resources

Webinar Registration

ATCC - 10801 University Boulevard, Manassas, VA 20110

© 2017 American Type Culture Collection. The ATCC trademark and trade name, and any other trademarks listed in this publication are trademarks owned by the American Type Culture Collection unless indicated otherwise.

To receive emails from ATCC, please take a few minutes to update your profile [click here](#).

To Unsubscribe, [click here](#).

[Privacy Policy](#).