

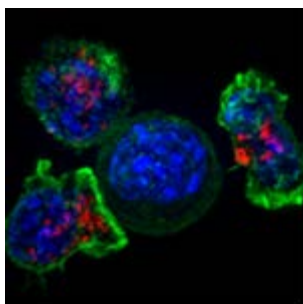


December 2017

Share:



cell passages



Primary Mononuclear Cells

ATCC offers primary mononuclear cells from peripheral blood ([ATCC® PCS-800-011™](#)) and bone marrow ([ATCC® PCS-800-013™](#)) that can be used immediately with your application-specific growth factors to provide reliable results for your experimental system.

[Order Primary Mononuclear Cells>>](#)

- Includes a mixed population: Dendritic cells, monocytes, and lymphocytes
- Monocytes can be further differentiated into macrophages or dendritic cells through culture with various cytokines
- Positive and negative biomarker information available
- Validated in T-cell suppression applications



CD 34+ Hematopoietic Cells

ATCC provides bone marrow-derived ([ATCC® PCS-800-012™](#)) and cord blood-derived ([ATCC® PCS-800-014™](#)) CD34+ cells that can be used to support physiologically relevant research in regenerative medicine, transplant studies, stem cell biology, hematology, and oncology.

[Explore CD34+ hematopoietic cells >>](#)

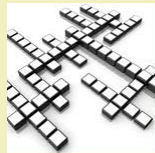


Immunological Research Tools

An effective immune system is critical for a complex organism's health and survival. ATCC supplies a wide variety of cultures, reagents, and services useful for this important area of research.

[Browse ATCC Immunological Research Tools](#)

- Leukemia cell lines
- Lymphoma cell lines
- Stem cells
- Viruses, bacteria, fungi, protists
- Hybridomas



ATCC Puzzle

Try this [month's crossword puzzle](#). The solution will appear in next month's issue.

For the solution to last month's puzzle [click here](#).

Resources

- **Application note:** Differentiation and expansion of hematopoietic precursor cells
- **Application note:** *In vitro* differentiation of macrophages and dendritic cells
- **Webinar:** Discovering ATCC hematopoietic progenitor cells



Frequently Asked Questions

Q: What basal media do you recommend for culturing [peripheral blood mononuclear cells \(PBMCs\)](#)?

A: The basal medium for PBMC culture is application-specific; however, RPMI 1640 ([ATCC® 30-2001™](#)) supplemented with 5-10% fetal bovine serum ([ATCC® 30-2020™](#)) is commonly used.

[Have more questions?](#)

[Cell Biology Collection](#)

[Cell Line Authentication](#)

[Facebook](#)

[Cell Biology Resources](#)

[Webinar Registration](#)

ATCC - 10801 University Boulevard, Manassas, VA 20110

© 2017 American Type Culture Collection. The ATCC trademark and trade name, and any other trademarks listed in this publication are trademarks owned by the American Type Culture Collection unless indicated otherwise.

To receive emails from ATCC, please take a few minutes to update your profile [click here](#).

To Unsubscribe, [click here](#).

[Privacy Policy](#).