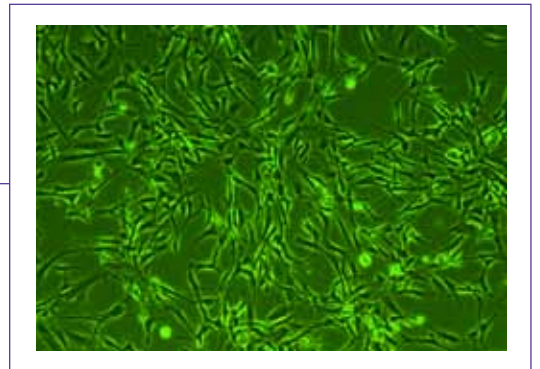




AORTIC SMOOTH MUSCLE CELLS

ATCC® Normal Human Primary Aortic Smooth Muscle Cells, when grown in Vascular Cell Basal Medium supplemented with Vascular Smooth Muscle Growth Kit components, provides an ideal cell system for propagation in low-serum conditions (5% FBS).



Each lot of ATCC® Normal Human Primary Aortic Smooth Muscle Cells is:

- Cryopreserved in the second passage to ensure the highest viability and plating efficiency.
- Performance tested together with ATCC® Primary Cell Solutions™ media, kit supplements and reagents to guarantee optimum reliability.
- Thoroughly tested for sample purity as part of the ATCC commitment to quality.

Applications for use might include research related to arteriosclerosis; hypertension; arterial disease; vascular wound healing; apoptosis; tissue remodeling; vascular differentiation; and drug screening/development.

OPTIMIZED GROWTH MEDIUM MAKES A DIFFERENCE

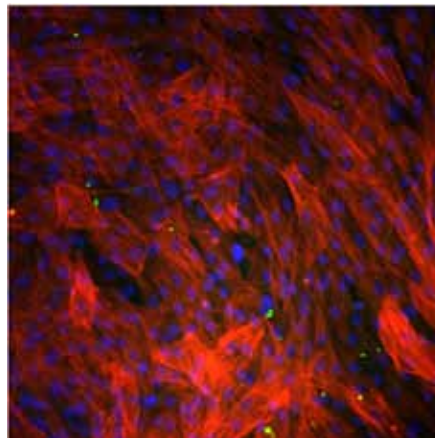
Vascular Cell Basal Medium is a sterile, phenol red-free, liquid tissue culture medium intended for use as one component in a complete ATCC® Primary Cell Solutions™ system. Each complete ATCC® Primary Cell Solutions™ vascular cell system is designed to selectively sustain the proliferation and plating efficiency of cells derived from normal human cardiovascular tissues including smooth muscle cells, as well as large vessel endothelial cells (e.g., from the umbilical vein, aorta) and microvascular endothelial cells.

Primary aortic smooth muscle cells are effectively supported by the cell-specific ATCC® Primary Cell Solutions™ system consisting of Vascular Cell Basal Medium supplemented with the Vascular Smooth Muscle Cell Growth Kit. This unique formulation is designed to produce cultures with:

- Functional expression of relevant biomarkers;
- Normal morphology; and
- Superior growth and proliferation.

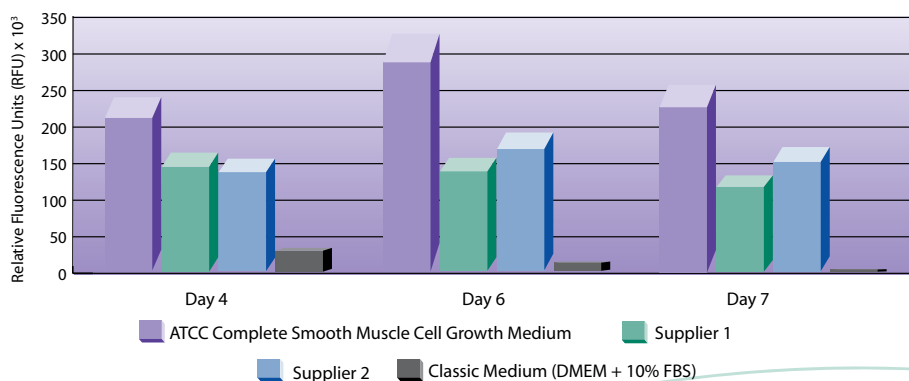
Use of this complete system removes the need for additional components such as feeder layers, extracellular matrix proteins or other substrates.

Expression of Cell-Specific Markers



ATCC Primary Cell Solutions aortic smooth muscle cells were dual stained for von Willebrand factor (as a marker for endothelial cells) and smooth muscle α -actin after differentiation. Red fluorescence indicates the expression of α -actin and green fluorescence points to the expression of von Willebrand factor. The nuclei are blue with Hoeschst stain. The low level of von Willebrand factor expression demonstrates the purity of the aortic smooth muscle cell preparation.

Growth of Primary Human Aortic Smooth Muscle Cells in Different Brands of Low Serum or Classical Media



ATCC Primary Cell Solutions aortic smooth muscle cells were taken from liquid nitrogen and cultures initiated. The cells were cultured for 3 to 4 days. The cells were then seeded in triplicate into a 24-well plate at 2,000 cells/cm², 600 cells/cm², or 200 cells/cm², and grown for 4, 6, or 7 days respectively in different brands of low serum or classical media. Cell proliferation was measured by adding alamarBlue[®] to each well, incubating for two hours, and then measuring fluorescence using a Wallac VICTOR2[™] MultiLabel Counter. The medium was not changed during the incubation period; the assay is a measure of a media's capacity to support log-phase growth over time. The higher the Relative Fluorescence Unit (RFU) value, the higher the rate of cell proliferation.

ORDERING INFORMATION

To achieve the best possible results, we suggest that you order a complete system for each cell type:



PUTTING ALL THE PIECES TOGETHER ADDS UP TO YOUR SUCCESS.

Product Name	Components	Price	Catalog No.
1 Primary Aortic Smooth Muscle Cells; Normal, Human	≥ 5 x 10 ⁵ viable cells	\$599	PCS-100-012
2 Vascular Cell Basal Medium	475 ml	\$49	PCS-100-030
3 Vascular Smooth Muscle Cell Growth Kit	1 kit	\$69	PCS-100-042
4 Phenol Red	1 ml	\$22	PCS-999-001
4 Penicillin-Streptomycin-Amphotericin B Solution	1 ml	\$22	PCS-999-002
4 Trypsin-EDTA for Primary Cells	100 ml	\$24	PCS-999-003
4 Trypsin Neutralizing Solution	100 ml	\$24	PCS-999-004
4 Gentamicin-Amphotericin B Solution	1 ml	\$22	PCS-999-025
4 Dulbecco's Phosphate Buffered Saline (D-PBS)	500 ml	\$12	ATCC 30-2200

Additional cells/cell types will be added in the coming months.

Visit us online at www.atcc.org to bookmark the primary cell page for easy reference.

SUPERIOR QUALITY. EXPERT SUPPORT. RELIABLE RESULTS.

For more information or to order:

Phone: 800-638-6597
703-365-2700
Fax: 703-365-2750
E-mail: sales@atcc.org

PC03-0109-01-01

ATCC[®]

P.O. Box 1549
Manassas, VA 20108
Phone: 800.638.6597 or
703-365-2700
Fax: 703-365-2750

These products are intended for Research Use Only. They are not intended for human, animal or diagnostic use.
©2009 American Type Culture Collection. The ATCC trademark and trade name and any and all ATCC catalog marks are trademarks of the American Type Culture Collection. alamarBlue[®] is a registered trademark of TREK Diagnostic Systems. Wallac VICTOR2[™] is a trademark of PerkinElmer Corporation.