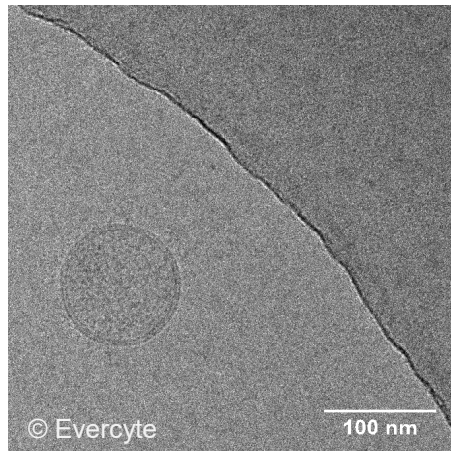


WJ-MSC/TERT273

Electron microscopy of secreted vesicles



WJ-MSC/TERT273 cells grown in a hollow fiber bioreactor allow the continuous production of extracellular vesicles. These vesicles are about 100-140 nm in size as shown by nanoparticle tracking analysis and are characterized by a lipid double layer membrane structure as evaluated using cryoTEM.

